

Psychology
Paper- 112
Psychology and
Effective Behaviour-2

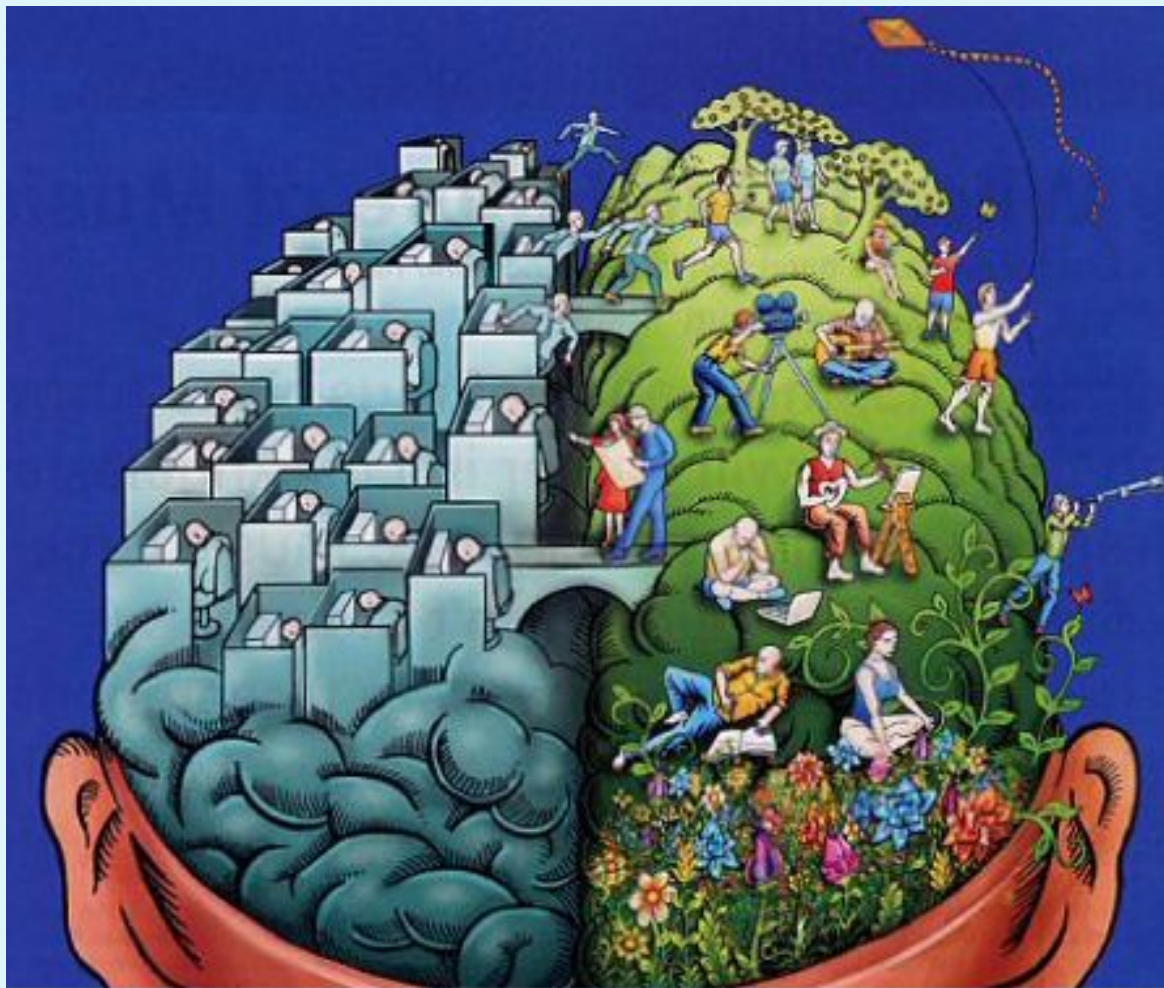
Umiya Arts College, sola

Kunjbihari (Visiting Faculty)

Unit -2

Intellectual Education

- The components of Effective Education:-
 - (1) Characteristic of the learner.
 - (2) The form of the teaching material.
 - (3) Learning Methods.
 - (4) Feedback



Is There a Digital Divide or an Intellectual-Pedagogical One?

(1) Characteristic of the learner.

- Pre- Education, & material.
- Motivation.
- Reference Structure.
- Personal Maturity & Adjustment.

(2) The form of the teaching material

- The type of learning task.
- Learning Proportion, Complexity, Familiarity.
- Explanation of teaching work.
- The environment of learning work

(3) Learning Methods.

- Use the equipment or the convenience.
- Proper planning.
- Flexible role or proper planning.
- Adjusting the Strategy.
- Expand experience

(4) Feedback

- Knowledge of the result
- Revenge and punishment

Creative Considerations

- Explore the new.
- New concepts.
- New understanding.
- New Method.

The process of creativity

- Original ideas unfold.
- Innovation.
- To be a reality.
- Insights.

The stages of creative consideration

- Orientation.
- Preparation.
- Confidentiality.
- Intuitive.
- Verification

- Thank You